



Sustainable Energy

About us

Joint Tech was established in 2015. As a national high tech manufacturer, we offer both ODM and OEM service for EV Charger, Residential Energy Storage and Smart Pole. Our products have been installed in more than 35 countries with global certificates of ETL, Energy Star, FCC, CE, CB, UKCA, and TR25 etc.

Joint currently has over 200 employees, more than 35% are engineers who covers hardware, software, mechanical and packaging design. We own more than 80 patents, including 5 invention patents from the United States.

Quality control is considered as the top priority of Joint. We strictly follow ISO9001 and TS16949 to control the design, process and production. As the 1st Satellite lab of Intertek and TUV, Joint has advanced full function testing equipments. Also, we are qualified for ISO14001, ISO45001, IATF16949, Sedex and EcoVadis (silver medal).

Joint Tech is dedicated to R&D, intelligent manufacturing and marketing in new energy industry, we desire to provide more green products based on specific application scenarios to our global customers.



35000m²
Factory Size



200+
Total Employees



80
Certifications & Patents



3
R & D Centers



CERTIFICATIONS



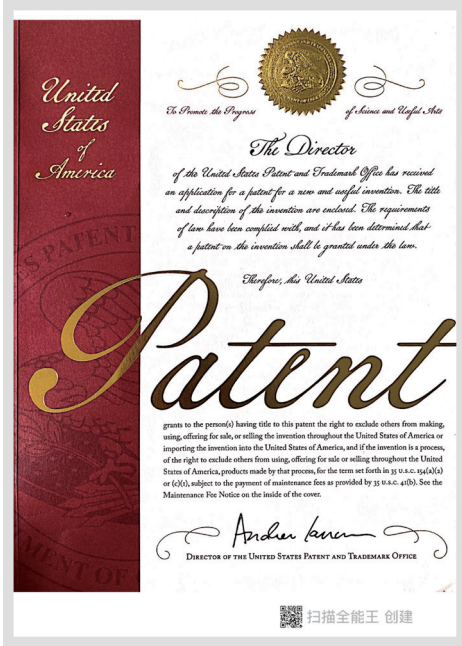
GB/T 14001



GB/T 45001



GB/T 19001



US PATENT

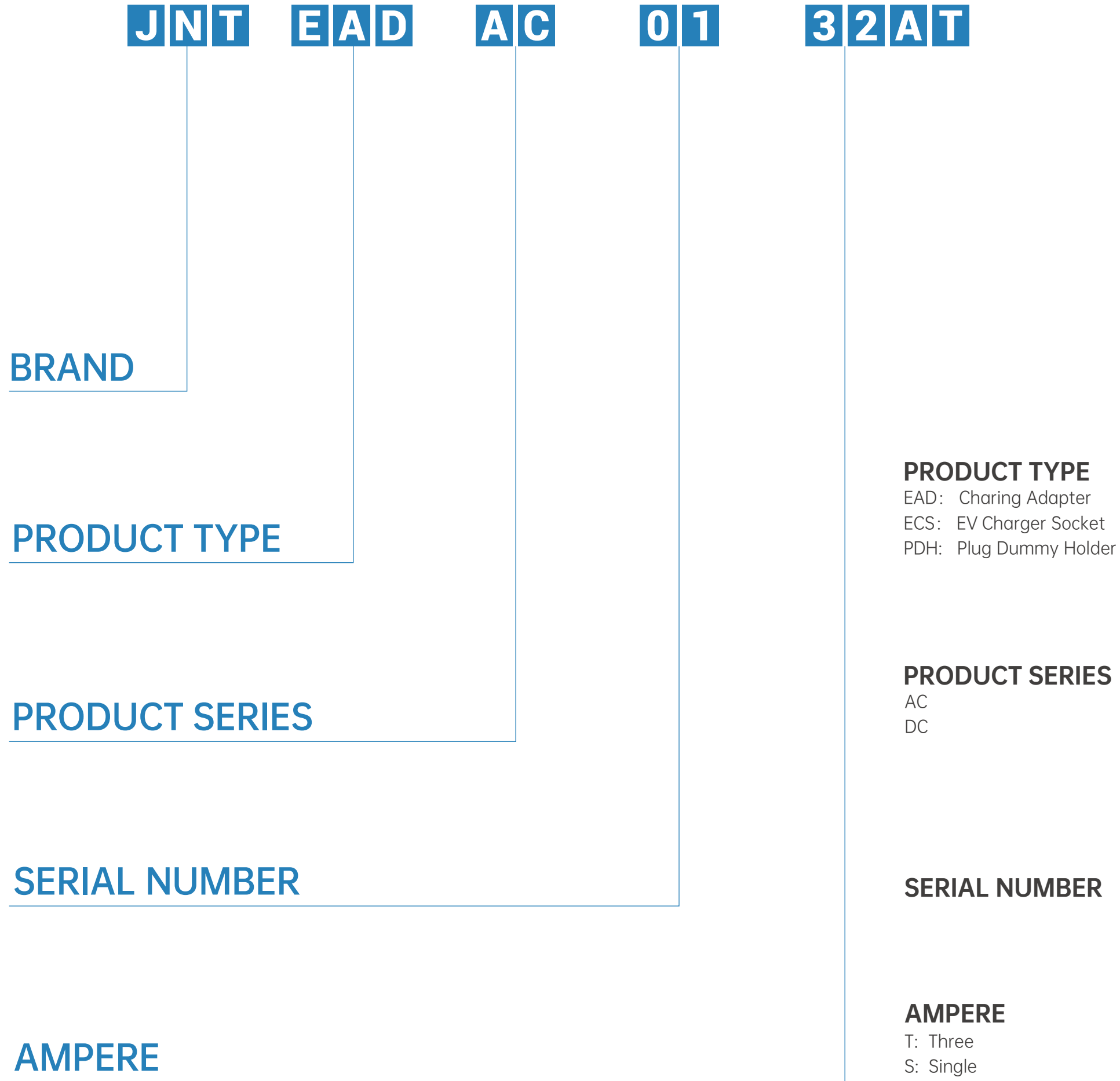


- ISO 15118
- OCPP 1.6 & 2.0.1

TR25

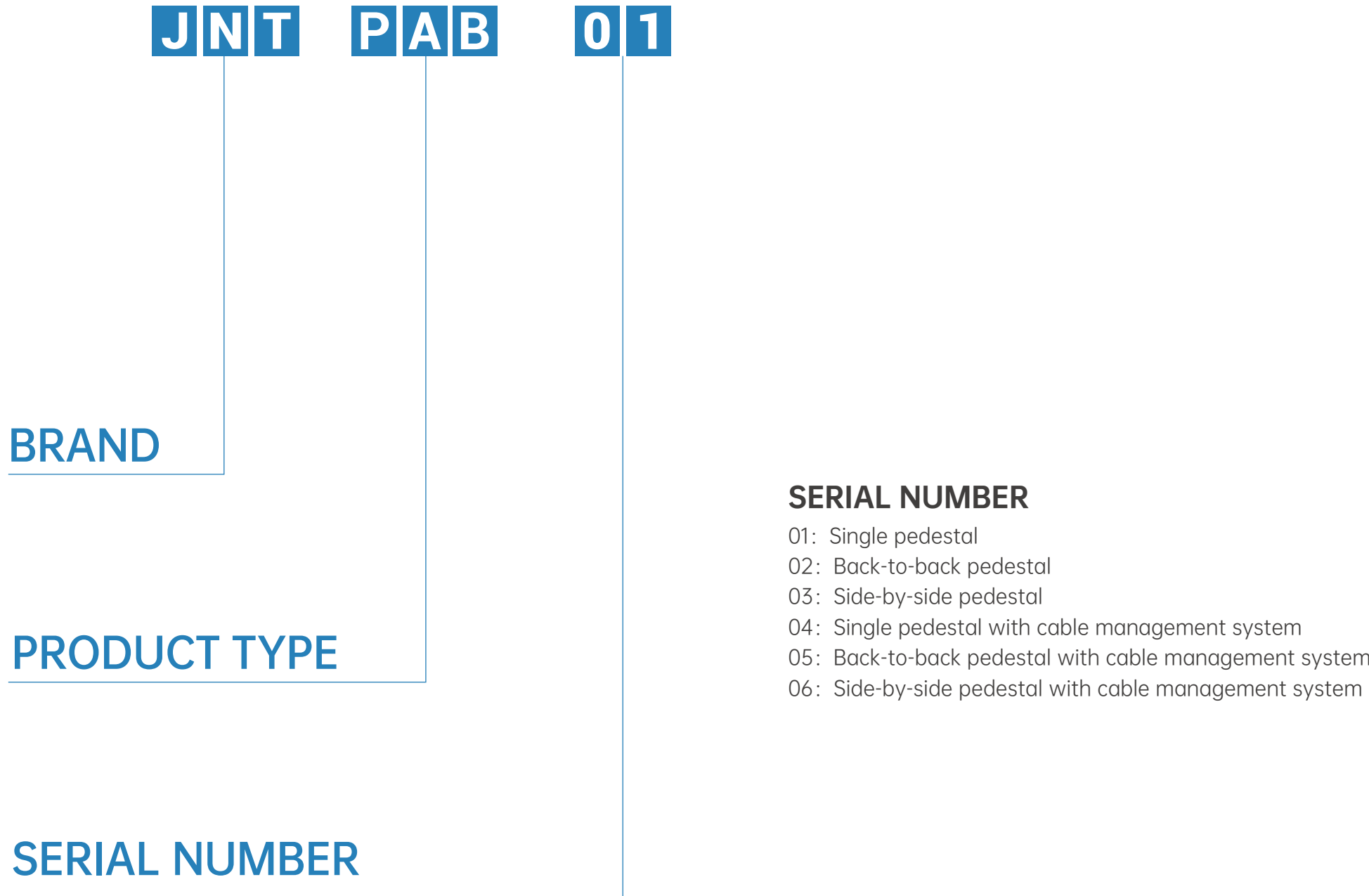
PRODUCT MODEL CODE RULES

Charing Adapter



Example: **JNT/EAD/AC/01/32AT**

Pedestal



Example: **JNT-PAB-01**

CONTENTS

A Portable EV Charger 01

B EV Charger Socket 04

C Charing Adapter 07

D EV Charger Cable 12

E EV Plug Holder 14

F Pedestal 16

Portable EV Charger

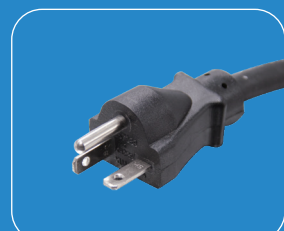


Portable EV Charger

EU



NEMA 14-50P



NEMA 6-20P



Schuko



UK



CEE



CEE

Product Feature

- Maximum 22KW high power charging, downward compatible with 11kw, 7kw, 3.5kw
- With temperature detection, can avoid high
- Automatic fault repair to ensure the stable operation of products
- Can make an appointment to charge, more cost savings

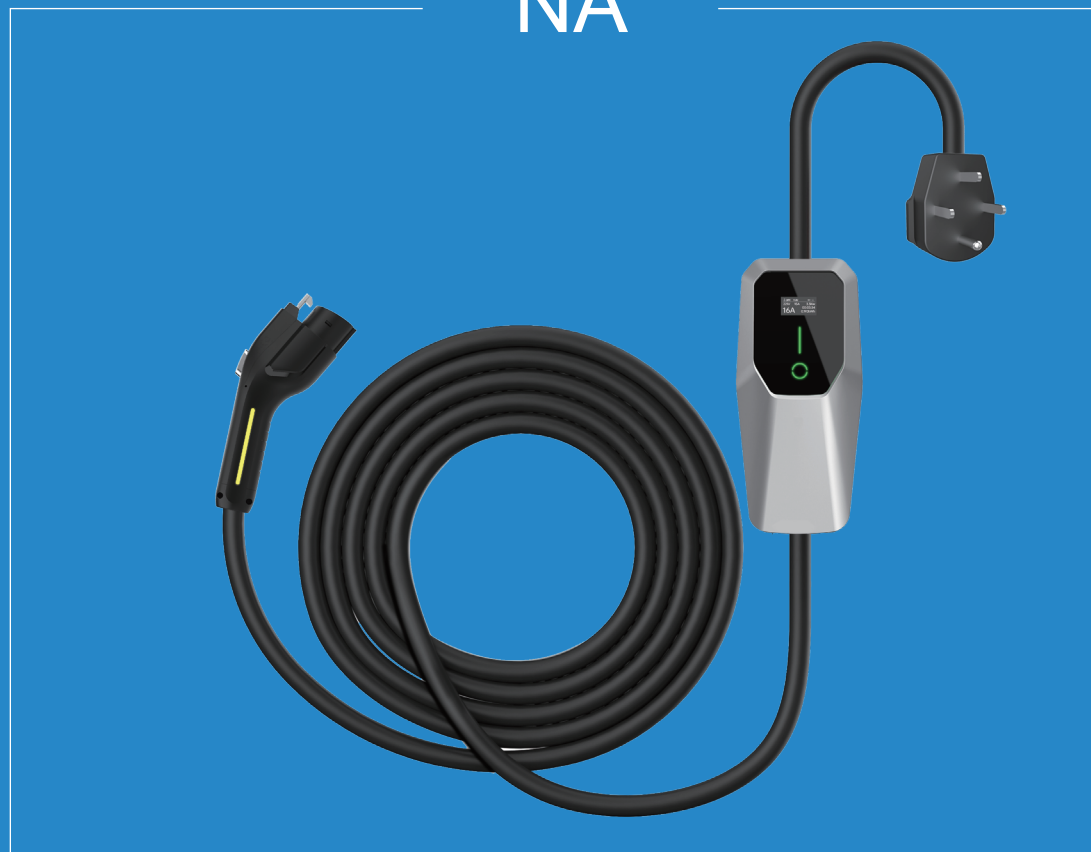


Electrical Performance

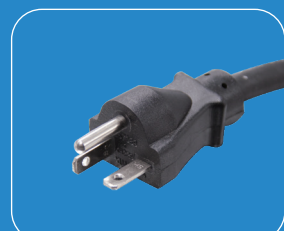
Product Model	EVB04 Series		
Power Specification	Input	Input Rating	220V/380V
		Input Current	8A、 10A、 13A、 16A、 32A
		Frequency	50Hz/60Hz
	Output	Output Current	8A、 10A、 13A、 16A、 32A
Environmental	Operating Temperature	-30°C~50°C	
	Humidity	Max. 95% RH	
	Altitude	≤ 2000m	
	IP Level	IP65 for box	
	Cooling Method	Natural Cooling	
Mechanical	Charging Outlet	4.5m charging cable	
Protection	Multiple Protection	Over current, Under voltage, Over voltage, Residual current, Surge protection, Short circuit, Over temperature, Ground fault, Current leakage protection	
Regulation	Charging Interface	IEC62196	
Terminal Connection	CEE (16A / 32A / 16A3P / 32A3P) / Schuko / UK / NEMA 5-15 / NEMA 6-20 / AU / NZ		
Warranty	2 years		
Certification	CE		

Portable EV Charger

NA



NEMA 14-50P



NEMA 6-20P



Schuko



UK



CEE



CEE

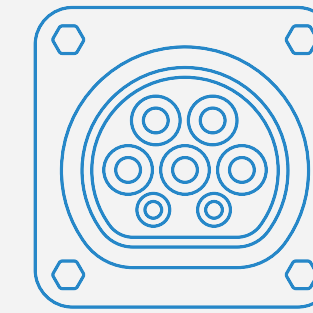
Product Feature

- With temperature detection, can avoid high
- Automatic fault repair to ensure the stable operation of products
- Can make an appointment to charge, more cost savings



Electrical Performance

Product Model	EVB04 Series		
Power Specification	Input	Input Rating	200-240Vac
		Input Current	16A、 32A
		Frequency	50Hz/60Hz
	Output	Output Current	16A、 32A
Environmental	Operating Temperature	-22°C~122°C	
	Humidity	Max. 95% RH	
	Altitude	≤ 6561ft	
	IP Level	IP65 for box	
	Cooling Method	Natural Cooling	
Mechanical	Charging Outlet	15ft charging cable	
Protection	Multiple Protection	Over current, Under voltage, Over voltage, Residual current, Surge protection, Short circuit, Over temperature, Ground fault, Current leakage protection	
Regulation	Charging Interface	SAEJ1772	
Terminal Connection	CEE (16A / 32A / 16A3P / 32A3P) / Schuko / UK / NEMA 5-15 / NEMA 6-20 / AU / NZ		
Warranty	2 years		
Certification	FCC		

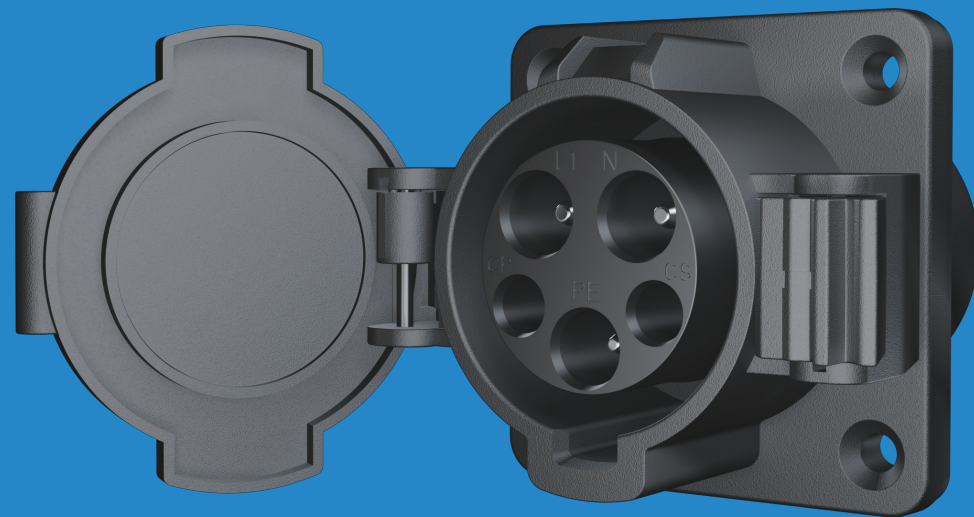


EV Charger Socket

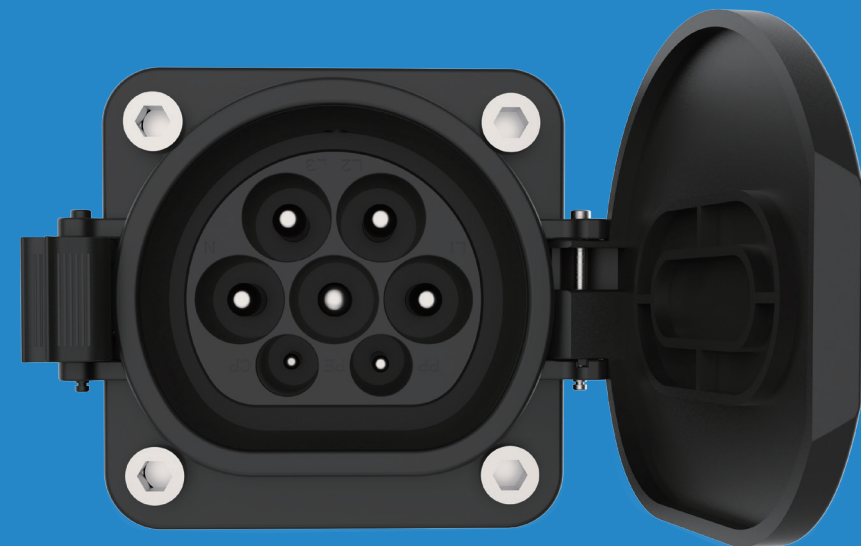


AC EV Charger Socket

Type1 EV Socket



Type2 EV Socket



Type2 EV Socket



Product Feature

High Quality Material

EV Charger Socket adopts TPE sheath which is highly insulated and aging resistant, and improve the socket bending time and wear resistance, with stable performance, high precision and good reliability



Electrical Performance

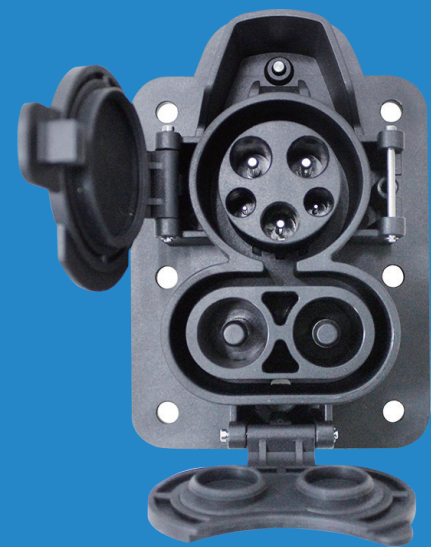
Item	Type1 EV Socket	Type2 EV Socket	
		JNT/ECS/AC/02/32AS JNT/ECS/AC/02/32AT JNT/ECS/AC/02/16AS JNT/ECS/AC/02/16AT	JNT/ECS/AC/03/32AS JNT/ECS/AC/03/32AT JNT/ECS/AC/03/16AS JNT/ECS/AC/03/16AT
Product Model	JNT/ECS/AC/01/32AS JNT/ECS/AC/01/16AS		
Rated Opearing Current	16A / 32A		
Standard	SAE J1772, IEC62196		
Operation Voltage	240V AC	250V / 480V AC	
Insulation Resistance	>1000MΩ(DC500V)		
Withstand Voltage	2000V		
Contact Resistance	0.5 mΩ Max		
Terminal Temperature Rise	<50K		
Operation Temperature	-30℃- +50℃		
Impact Insertion Force	<100N		
Mechanical Life	>10000times		
Protection Degree	IP54		
Flame Retardant Grade	UL94V-0		
Certification	CE		

DC EV Charger Socket

CCS Combo2 Inlet Socket



CCS Combo1 Inlet Socket



Product Feature

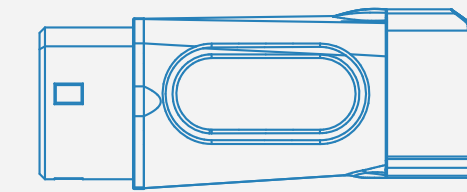
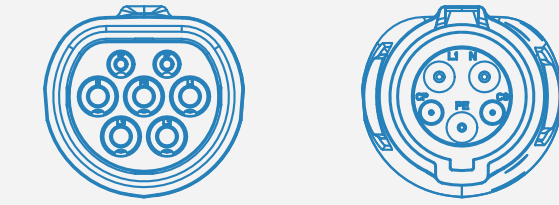
Safe Use

EV Charger Socket is highly in line with CE, SAE J1772 approved for maximum security, without worrying about any security issues



Electrical Performance

Item	CCS Combo2 Inlet Socket	CCS Combo1 Inlet Socket
Product Model	JNT/ECS/DC/04/80A JNT/ECS/DC/04/125A JNT/ECS/DC/04/150A JNT/ECS/DC/04/200A	JNT/ECS/DC/05/80A JNT/ECS/DC/05/125A JNT/ECS/DC/05/150A JNT/ECS/DC/05/200A
Rated Opearing Current	80A/125A/150A/200A	
Standard	SAE J1772, IEC62196	
Operation Voltage	250V / 480V AC; 1000V DC	
Insulation Resistance	>2000MΩ(DC1000V)	
Withstand Voltage	3000V	
Contact Resistance	0.5 mΩ Max	
Terminal Temperature Rise	<50K	
Operation Temperature	-30°C- +50°C	
Impact Insertion Force	<100N	
Mechanical Life	>10000times	
Protection Degree	IP54	
Flame Retardant Grade	UL94V-0	
Certification	CE	



Charing Adapter



AC Charing Adapter

Type1 to Tesla EV Adapter



Tesla to Type1 EV Adapter



Type1 to GB/T EV Adapter



Product Feature

IP54 Protection Class

EV Charger Connector is professionally designed for greatly protection up to IP54 rate in working condition for using at ease

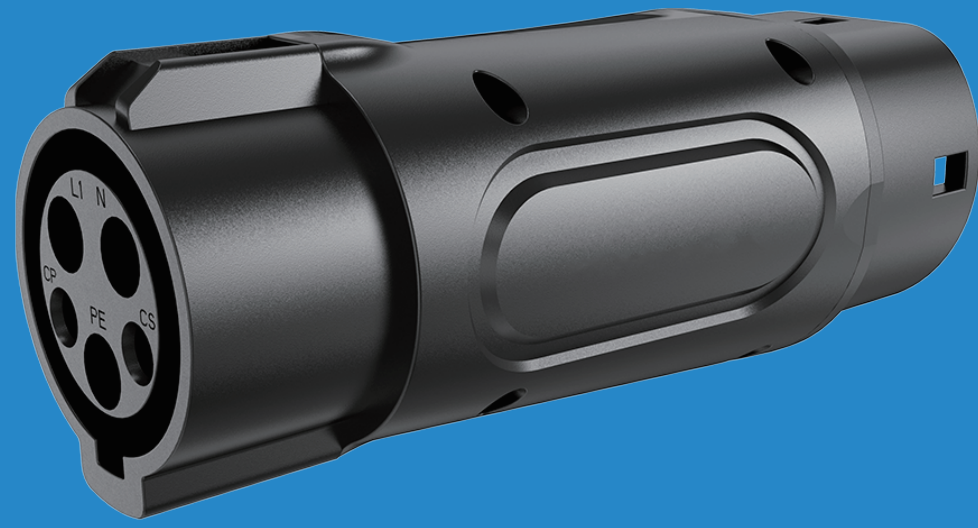


Electrical Performance

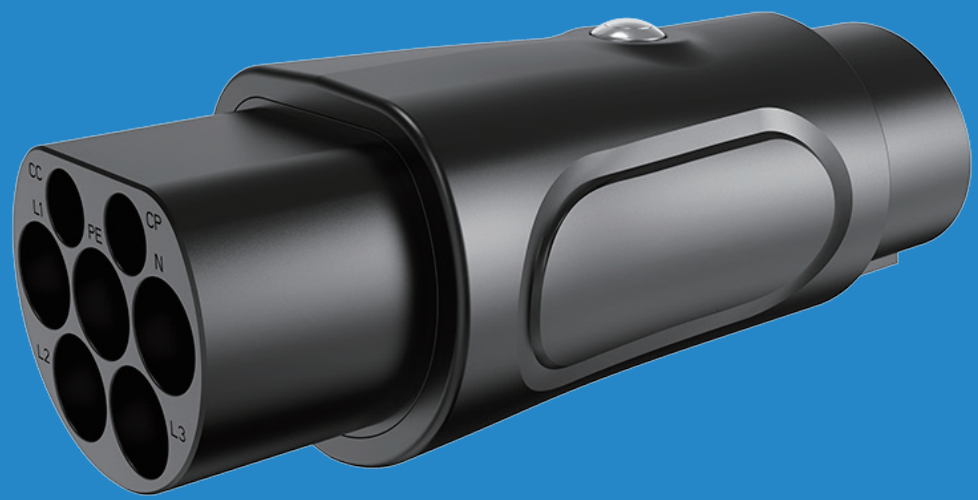
Item	Type1 to Tesla EV Adapter	Tesla to Type1 EV Adapter	Type1 to GB/T EV Adapter
Product Model	JNT/EAD/AC/01	JNT/EAD/AC/02	JNT/EAD/AC/03
Rated Opearing Current	60A	48A	32A
Standard	SAE J1772, IEC62196		
Operation Voltage	AC 110V~250V		AC 250V
Insulation Resistance	>1000MΩ(DC500V)		
Withstand Voltage	2000V		
Contact Resistance	0.5 mΩ Max		
Terminal Temperature Rise	<50K		
Operation Temperature	-30℃- +50℃		
Impact Insertion Force	<100N		
Mechanical Life	>10000times		
Protection Degree	IP54		
Flame Retardant Grade	UL94V-0		
Certification	CE		

AC Charging Adapter

Type1 to Type2 EV Adapter



Type2 to Type1 EV Adapter



Type2 to GBT EV Adapter



Product Feature

Good Flame Retardancy

Electric Vehicle Charging Adapter is made of advanced thermoplastic with UL94-V-0 flame retardant, can work under the conditions of -30℃ to 50℃

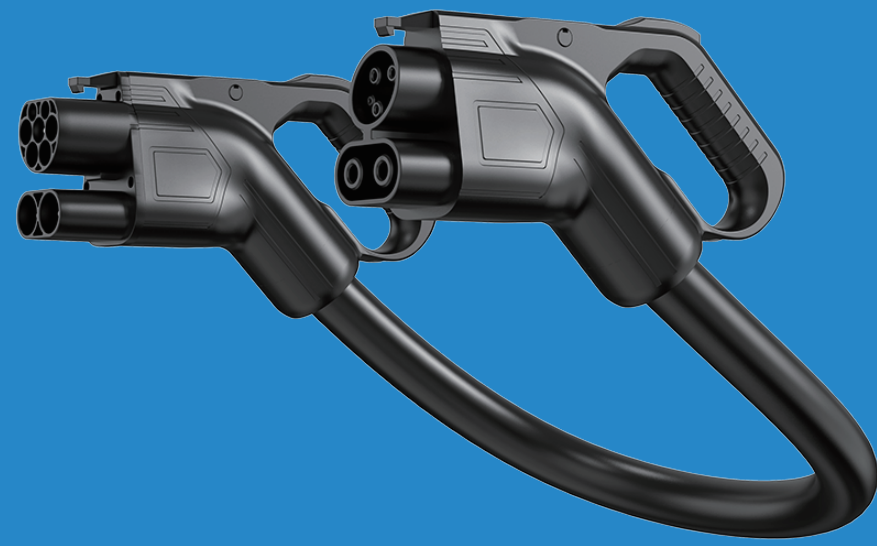


Electrical Performance

Item	Type1 to Type2 EV Adapter	Type2 to Type1 EV Adapter	Type2 to GBT EV Adapter
Product Model	JNT/EAD/AC/04	JNT/EAD/AC/05	JNT/EAD/AC/06
Rated Opearing Current	32A		
Standard	SAE J1772, IEC62196		IEC62196,GBT
Operation Voltage	250V AC		AC250V /480V
Insulation Resistance	>1000MΩ(DC500V)		
Withstand Voltage	2000V		
Contact Resistance	0.5 mΩ Max		
Terminal Temperature Rise	<50K		
Operation Temperature	-30℃- +50℃		
Impact Insertion Force	<100N		
Mechanical Life	>10000times		
Protection Degree	IP54		
Flame Retardant Grade	UL94V-0		
Certification	CE		

DC Charing Adapter

CCS2 to CCS1 EV Adapter



CCS1 to CCS2 EV Adapter



Product Feature

Safe Use

EV Charging adapter is highly in line with CE, SAE J1772 approved for maximum security, without worrying about any security issues



Electrical Performance

Item	CCS2 to CCS1 EV Adapter	CCS1 to CCS2 EV Adapter
Product Model	JNT/EAD/DC/01	JNT/EAD/DC/02
Rated Opearing Current	150A MAX	
Standard	SAE J1772, IEC62196	
Operation Voltage	1000V DC	
Insulation Resistance	>1000MΩ(DC500V)	
Withstand Voltage	2000V	
Contact Resistance	0.5 mΩ Max	
Terminal Temperature Rise	<50K	
Operation Temperature	-30°C- +50°C	
Impact Insertion Force	<100N	
Mechanical Life	>10000times	
Protection Degree	IP54	
Flame Retardant Grade	UL94V-0	
Certification	CE	

DC Charging Adapter

CCS1 to Telsa EV Adapter



CCS2 to Telsa EV Adapter



Product Feature

IP54 Protection Class

EV Charging adapter is professionally designed for greatly protection up to IP54 rate in working condition for using at ease



Electrical Performance

Item	CCS1 to Telsa EV Adapter	CCS2 to Telsa EV Adapter
Product Model	JNT/EAD/DC/03	JNT/EAD/DC/04
Rated Opearing Current		125A MAX
Standard		IEC62196
Operation Voltage		500V DC
Insulation Resistance		>1000MΩ(DC500V)
Withstand Voltage		2000V
Contact Resistance		0.5 mΩ Max
Terminal Temperature Rise		<50K
Operation Temperature		-30°C- +50°C
Impact Insertion Force		<100N
Mechanical Life		>10000times
Protection Degree		IP54
Flame Retardant Grade		UL94V-0
Certification		CE



EV Charger Cable



EV Charger Cable

Type2 to Type2 EV Charger Cable



Type2 to Type1 EV Charger Cable



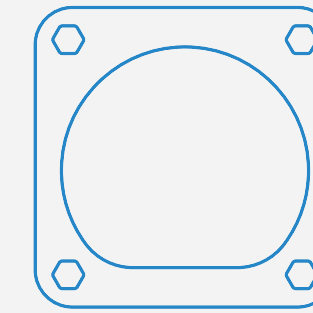
Product Feature

Allow you to charge your electric vehicle at any Type 2 socketed public or home charging unit, with 18ft cable. Conform to strict quality control standards, dependable to use.



Electrical Performance

Item	Type2 to Type2 EV Charger Cable	Type2 to Type1 EV Charger Cable
Product Model	JNT/TPT2/32AT JNT/TPT2/16AT JNT/SPT2/32AS JNT/SPT2/16AS	JNT/T2T1/32AS
Rated Opearing Current	16A/32A	32A
Standard	SAE J1772, IEC62196	
Operation Voltage	250V / 480V	240V AC
Operation Temperature	-30°C- +50°C	
Impact Insertion Force	<100N	
Mechanical Life	>10000times	
Protection Degree	IP65	
Flame Retardant Grade	UL94V-0	
Cable length	18ft	
Certification	TUV / CE / UKCA / CB	




EV Plug Holder



EV Plug Holder

JNT/PDH/AC/01



J1772 Type1 Plug
Dummy Holder

JNT/PDH/AC/02



IEC62196 Type2 Plug
Dummy Holder

JNT/PDH/DC/01



CCS Combo 1 Plug
Dummy Holder

JNT/PDH/DC/02



CCS Combo 2 Plug
Dummy Holder

JNT/PDH/AC/03



J1772 Type1 Plug
Dummy Holder

JNT/PDH/AC/04



IEC62196 Type2 Plug
Dummy Holder

JNT/PDH/AC/05



J1772 Type1 Plug
Dummy Holder

JNT/PDH/AC/06



IEC62196 Type2 Plug
Dummy Holder

Pedestal



Pedestal

JNT-PAB-01



Single pedestal

JNT-PAB-02



Back-to-back pedestal

JNT-PAB-03



Dual side-to-side pedestal

Pedestal

JNT-PAB-04



single pedestal with cable management system

JNT-PAB-05



Back-to-back pedestal with cable management system

JNT-PAB-06



Dual side-to-side pedestal cable management system

JNT-WCR



Cable Retrator



🌐 <https://jointcharger.com>

✉ info@jointcharger.com

📍 No.98, South Dongfu Road, Haicang District, Xiamen, China